

LINEA CITTÀ

Prefab Kiosks & Sanitation Systems

AUTOMATIC URBAN TOILET

Company profile



Linea Città
established in 1992



Qualified team
20 people



Certified
quality system



Patented
technologies



Over 2.500
installations



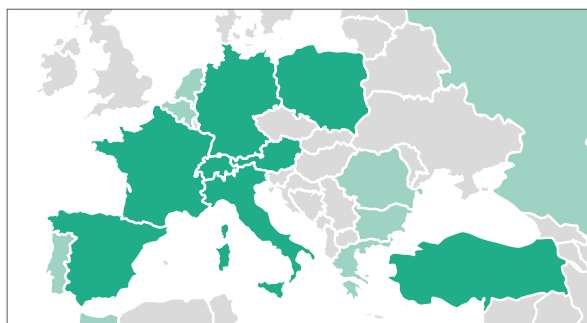
Global



Made in Italy

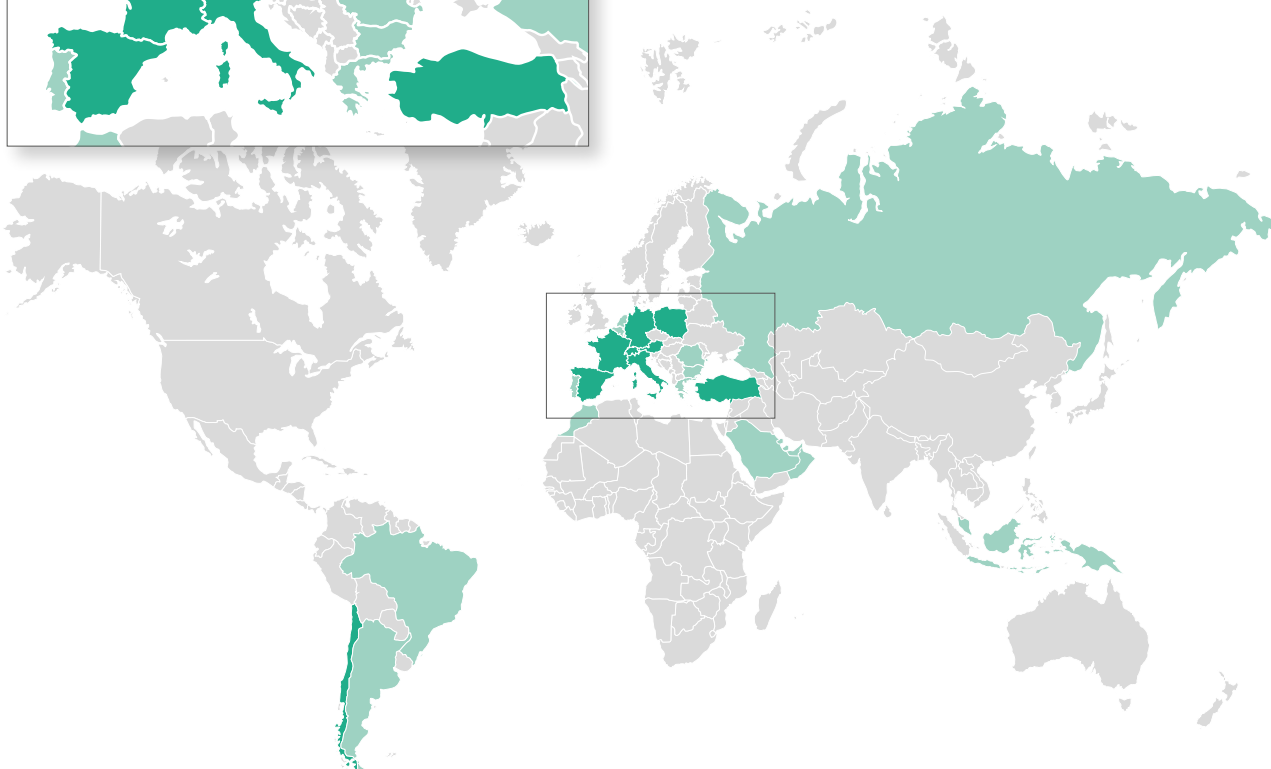


Long Life
Guarantee



Linea Città is global

■ installations
■ trade



Company profile



Removing
architectonic barriers



Improving
hygiene



Environmental
and Urban care



Decreasing
maintenance costs



Safe
automation



Fast cleaning
and drying



Ease of use



Anti-vandalism
technologies

The company's strategy has always been focused on quality. Products are constantly updated through a careful selection of technologies, materials and the production process control.

The goals of Linea Città are

- removing architectural barriers to help people with disabilities
- improving hygiene standards of public toilets
- contributing to environmental care and urban decorum
- decreasing maintenance costs of public toilets and providing self-financing opportunities

Linea Città offers four types of prefab kiosks, highly customisable, covering a wide range of applications and settings

- TWIN
- LIBERO
- REALE
- BOX+

All installations are carried out with the utmost respect of structural and functional standards to **guarantee maximum user safety**.

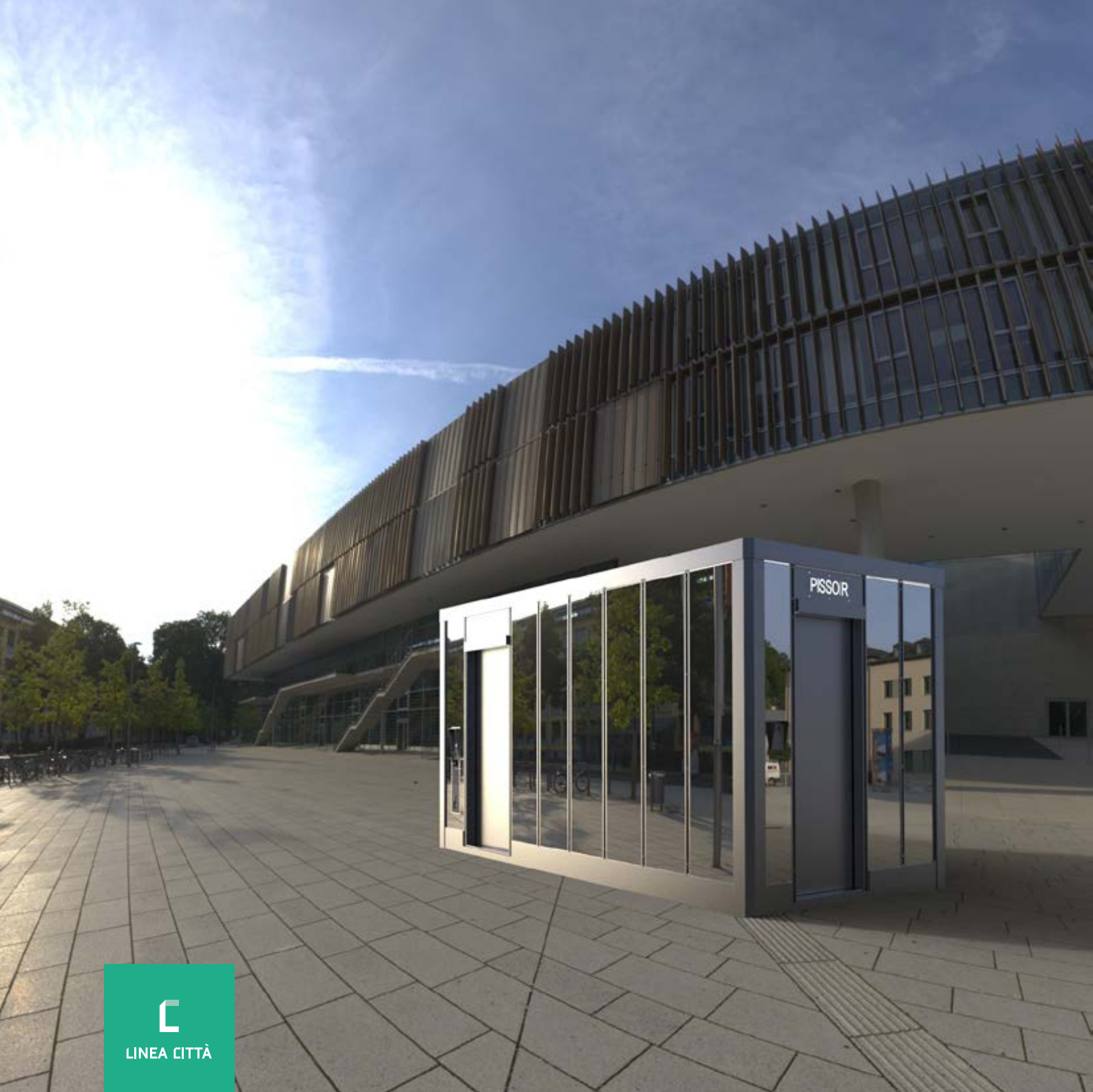
Linea Città offers three types of equipment that allow the cleaning and sanitation of toilets and surfaces. Each equipment differs for its technology, offering a wide range of possibilities

- NOBILE
- SWING
- TRIAX

The equipment can be installed in our prefab kiosks or in **existing buildings** with built-in installation.

Our technologies are specifically suited for these applications

- squares and historical centres
- public parks
- train and subway stations
- stops at public transport lines
- market areas
- outdoor and underground parking
- highway rest areas
- beach clubs and waterfront
- campings and tourist residences
- ski resorts and sports facilities
- fuel stations
- ports and airports



LINEA CITTÀ

AUTOMATIC URBAN TOILET

BOX+

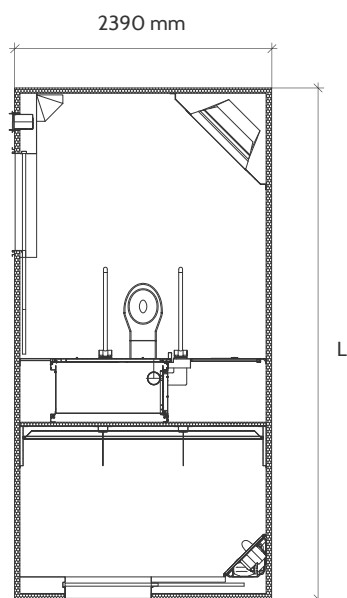
- ✓ Automatic sanitation system of toilet, floor and surfaces
- ✓ Reduced water consumption and maintenance costs
- ✓ Customisable size and interior / exterior finishes
- ✓ Available in reinforced concrete, and fibreglass sandwich panels
- ✓ Structural and plant compliance

Features

1. Transparent skylight window for natural light
2. Bearing roof of steel and polyurethane insulated panels
3. Interior finishing fibreglass with tiles effect
4. Outer wall of steel to be coated
5. Curtain wall sandwich panels
6. Emergency and signal devices
7. Combined with more services
8. Insulated structure
9. Reinforced coin box with interactive display
10. Automatic sliding door in stainless steel
11. Underfloor sensors for presence detection
12. Non-slip ribbed rubber flooring
13. Fibreglass sink block
14. Ceramic WC

Customizations

- ☐ Interior finish suitable for any coating (in the picture coating stainless steel [3])
- ☐ Outer surface suitable for any coating (in the picture mirror finish [4])
- ☐ Air conditioning
- ☐ Electric floor heating
- ☐ Water jets for floor washing and objects removal
- ☐ Complete washing of the wall behind the WC
- ☐ Water dispenser for bidet
- ☐ Bad smells suction system
- ☐ Heated WC seat *
- ☐ WC in stainless steel (in picture [14]) *
- ☐ Presence detection with radar system



The prefab kiosk depicted is equipped with the TRIAX system, but is also compatible with NOBILE and SWING systems.

*availability depends upon the installed system



LINEA CITTÀ

AUTOMATIC URBAN TOILET

LIBERO

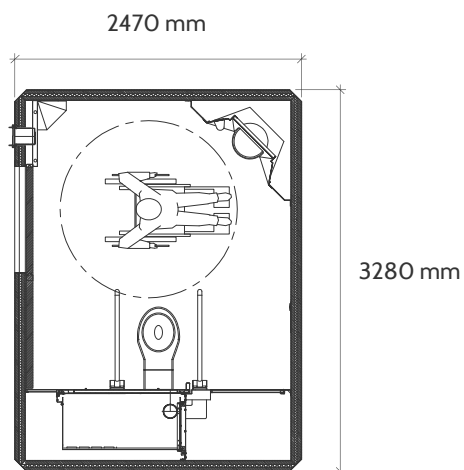
- ✓ Automatic sanitation system of toilet, floor and surfaces
- ✓ Reduced water consumption and maintenance costs
- ✓ Standard size 328 x 247 - h 290 cm
- ✓ Structure in insulated fibreglass
- ✓ Structural and plant compliance

Features

1. Transparent dome for natural light
2. Insulated structure in coloured fibreglass
3. Roof in coloured fibreglass
4. Cavity walls for plants
5. Reinforced concrete base
6. Emergency and signal devices
7. Reinforced coin box with interactive display
8. Automatic sliding door in stainless steel
9. Underfloor sensors for presence detection
10. Non-slip ribbed rubber flooring
11. Fibreglass sink block
12. Ceramic WC

Customizations

- ☐ Exterior wood effect finish
- ☐ Exterior brick effect finish
- ☐ Exterior coating with painted steel slats
- ☐ Exterior coating in coloured glass or mirror
- ☐ Air conditioning
- ☐ Electric floor heating
- ☐ Water jets for floor washing and objects removal
- ☐ Complete washing of the wall behind the WC
- ☐ Water dispenser for bidet
- ☐ Bad smells suction system
- ☐ Heated WC seat *
- ☐ WC in stainless steel (in picture [12]) *
- ☐ Presence detection with radar system



The prefab kiosk depicted is equipped with the TRIAX system, but is also compatible with NOBILE and SWING systems.

*availability depends upon the installed system



LINEA CITTÀ

AUTOMATIC URBAN TOILET

REALE

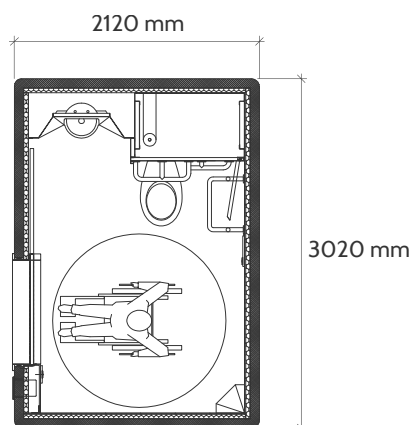
- ✓ Automatic sanitation system of toilet, floor and surfaces
- ✓ Reduced water consumption and maintenance costs
- ✓ Standard size 302 x 212 cm - h 290 cm
- ✓ Structure in reinforced concrete
- ✓ Structural and plant compliance

Features

1. Transparent dome for natural light
2. Insulation and bitumen roofing
3. Bearing roof in reinforced concrete
4. Painted ceiling
5. Interior wall with ceramic tiles
6. Exterior wall painted
7. Emergency and signal devices
8. Reinforced coin box with interactive display
9. Automatic sliding door in stainless steel
10. Underfloor sensors for presence detection
11. Non-slip ribbed rubber flooring
12. Fibreglass sink block
13. Ceramic WC

Customizations

- ☐ Insulated fibreglass roof (in picture [3])
- ☐ Wall insulation thickness 30 mm
- ☐ Interior coating in fibreglass tile effect
- ☐ Interior coating in stainless steel (in picture [5])
- ☐ Exterior coating in painted steel slats
- ☐ Exterior coating in coloured glass or mirror
- ☐ Exterior coating in wood slats
- ☐ Exterior coating in ceramic tiles (in picture [6])
- ☐ Air conditioning
- ☐ Electric floor heating
- ☐ Water jets for floor washing and objects removal
- ☐ Complete washing of the wall behind the WC
- ☐ Water dispenser for bidet
- ☐ Bad smells suction system
- ☐ Heated WC seat *
- ☐ WC in stainless steel (in picture [13]) *
- ☐ Presence detection with radar system



The prefab kiosk depicted is equipped with the TRIAX system, but is also compatible with NOBILE and SWING systems.

*availability depends upon the installed system



LINEA CITTÀ

AUTOMATIC URBAN TOILET

TWIN

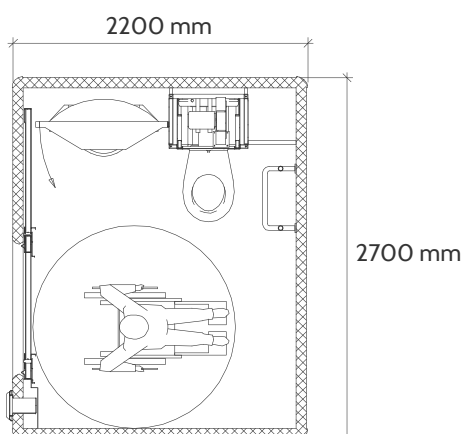
- ✓ Automatic sanitation system of toilet, floor and surfaces
- ✓ Reduced water consumption and maintenance costs
- ✓ Standard size 220 x 270 cm - h 280 cm
- ✓ Structure in reinforced concrete
- ✓ Structural and plant compliance

Features

1. Transparent dome for natural light
2. Insulation and bitumen roofing
3. Bearing roof in reinforced concrete
4. Painted ceiling
5. Painted frame
6. Exterior wall painted
7. Interior wall coated with ceramic tiles
8. Emergency and signal devices
9. Reinforced coin box
10. Semi-automatic sliding door in stainless steel
11. Infrared sensors for presence detection
12. Ribbed porcelain stoneware flooring
13. Fibreglass sink block
14. Ceramic WC

Customizations

- ☐ Wall insulation thickness 30 mm
- ☐ Exterior coating with tiles (in picture [6])
- ☐ Interior coating in fibreglass, tile effect
- ☐ Non-slip ribbed rubber flooring (in picture [12])
- ☐ Air conditioning
- ☐ Water jets for floor washing and objects removal
- ☐ Complete washing of the wall behind the WC
- ☐ Water dispenser for bidet
- ☐ Bad smells suction system
- ☐ Heated WC seat *
- ☐ WC in stainless steel *
- ☐ Underfloor sensors for presence detection
- ☐ Electric floor heating
- ☐ Presence detection with radar system



The prefab kiosk depicted is equipped with the SWING system, but is also compatible with NOBILE system.

*availability depends upon the installed system

Structural features

Features	BOX+	LIBERO	REALE	TWIN
Structure				
Base in reinforced concrete	✓	✓	✓	✓
Structure in reinforced concrete	-	-	✓	✓
Insulated structure in steel to be coated	✓	-	-	-
Structure in coloured fibreglass	✓	✓	-	-
Bearing roof in reinforced concrete	-	-	✓	✓
Bearing insulated roof in fibreglass	□	✓	□	-
Bearing roof in polyurethane steel	✓	-	-	-
Transparent dome for natural light	-	✓	✓	✓
Transparent skylight window for natural light	✓	-	-	-
Insulation and bitumen roofing	-	-	✓	✓
Wall insulation thickness 30 mm	-	-	□	□
Combined with more services	✓	□	□	-
Air conditioning	□	□	□	□
Mechanical Ventilation	✓	✓	✓	✓
Exterior finishes				
Painted concrete	-	-	✓	✓
Ceramic tile coating	-	-	□	□
Paint steel slats coating	□	✓	□	-
Coloured glass or mirror coating	□	□	□	-
Wood effect exterior finish	□	□	□	-
Brick effect exterior finish	□	□	□	-
Wooden slats coating	□	-	□	-
Interior finishes				
Ceramic tiles	-	-	✓	✓
Painted ceiling	-	-	✓	□
Tiles effect fibreglass	✓	✓	□	□
Stainless steel	□	□	□	□
Flooring				
Rubber flooring	✓	✓	✓	□
Porcelain ribbed stoneware flooring	□	□	□	✓
Washing systems				
TRIAX	✓	✓	✓	-
SWING	□	□	□	✓
NOBILE	□	□	□	□
Compliance				
Electric plant	✓	✓	✓	✓
Size suitable for person with disabilities	✓	✓	✓	✓
Instructions and audio signals for blinded people	✓	✓	✓	✓
Emergency and signal devices	✓	✓	✓	✓

Legend: (✓) Standard (□) Optional (-) Not available



PREFAB KIOSK BOX+



PREFAB KIOSK BOX+



PREFAB KIOSK LIBERO



PREFAB KIOSK LIBERO



PREFAB KIOSK REALE



PREFAB KIOSK REALE



PREFAB KIOSK TWIN



PREFAB KIOSK TWIN



Overview



time required to perform
the entire cleaning process:
45 seconds



customisable
with specific devices for
disabled



system under
European patent



system size:
A) 98,5 x 59 cm
B) 112,5 x 59 cm
height 225 cm



Features

- Washing and cleaning systems with pressurized water
- Washing system for the wall behind the WC equipped with directional nozzles
- Washing and light object removal across the floor
- Cleaning, sanitation of the WC inside a stainless steel tank, closed and separated from the user room and directly connected to the drain network to avoid the dispersion of bacteria
- Continuous water flow inside the WC while in use



**Watch the video
of the sanitation system**



Components

- Stainless steel automatic sliding door
- Presence detection with underfloor sensors
- Fibreglass sink block
- Reinforced coin box with interactive display
- Non-slip ribbed rubber flooring

Customizations

- ☐ Stainless steel WC
- ☐ Automatic water dispenser for bidet
- ☐ Seat heating for stainless steel WC



Overview



time required to perform
the entire cleaning process:
35 seconds



customisable
with specific devices for
disabled



system under
European patent



system size:
76 x 41 cm
height 200 cm

Features

- Independent operation in place of traditional hygienic WC
- The protective cover of the WC lifts up as the user comes in
- Cleaning, sanitation of the seat inside of a polyurethane tank, closed and separated from the user room and directly connected to the drain network to avoid the dispersion of bacteria.
- Cleaning and sanitizing the interior of the WC and the seat
- The protective cover of the WC automatically closes



Watch the video
of the sanitation system



Components

- Stainless steel semi-automatic sliding door
- Presence detection with infrared radar detection
- Fibreglass sink block
- Reinforced coin box with interactive display
- Ribbed porcelain stoneware flooring

Customizations

- Floor washing and light object removal
- Automatic water dispenser for bidet
- Hot air drying system
- Bad smells suction system

In breve



time required to perform
the entire cleaning process:
30 seconds



customisable
with specific devices for
disabled



system size:
63,5 x 40 cm
height 200 cm

Features

- Compact, versatile and suitable to any situation
- Ease of installation
- Independent operation in place of traditional hygienic WC
- Continuous water flow inside the WC while in use
- Automatic drain after use
- Cleaning and sanitation of the whole WC

Components

- Stainless steel semi-automatic sliding door
- Presence detection with infrared radar detection
- Fibreglass sink bloc
- Reinforced coin box
- Ribbed porcelain stoneware flooring

Customizations

- Floor washing and light object removal
- Washing system for the wall behind the WC
- Automatic water dispenser for bidet
- Hot air drying system
- Bad smells suction system
- Seat heating for stainless steel WC
- Presence detection with underfloor sensors



Watch the video
of the sanitation system



Features

Features	TRIAX	NOBILE	SWING
Components			
Stainless steel automatic sliding door	✓	□	□
Stainless steel semi-automatic sliding door	□	✓	✓
Manual swing door with electric lock	□	□	□
Fibreglass sink block	✓	✓	✓
Reinforced coin box with interactive display	✓	-	-
Reinforced coin box with instructions in 6 languages	-	✓	✓
Non-slip ribbed rubber flooring	✓	□	□
Ribbed porcelain stoneware flooring	□	✓	✓
Presence detection with infrared radar sensors	□	✓	✓
Presence detection with underfloor sensors	✓	□	□
WC			
Ceramic WC	✓	✓	✓
Stainless steel WC	□	-	□
Seat heating	□	-	□
WC protection cover	-	✓	-
Automatic water dispenser for bidet	□	□	□
Continuous water flow inside the WC while in use	✓	-	✓
Sanitation			
Whole WC sanitation	✓	-	✓
WC interior and seat sanitation	-	✓	-
Sanitation in different room	✓	✓	-
WC drying	✓	✓	✓
Automatic drain after use	✓	✓	✓
Sanitation required time	45 sec.	35 sec.	30 sec.
Floor washing and light object removal	✓	□	□
Washing of wall behind the WC	✓	-	□
Air drying system	✓	✓	✓
Bad smells suction system	-	□	□
Installation			
Prefab Kiosk TWIN	-	□	✓
Prefab Kiosk LIBERO	✓	□	□
Prefab Kiosk REALE	✓	□	□
Prefab Kiosk BOX+	✓	□	□
Installation in existing buildings	✓	✓	✓

Legend: (✓) Standard (□) Optional (-) Not available

Installation in buildings

Description

The NOBILE, SWING and TRIAX sanitation systems can be installed into existing buildings, meeting plant requirements, such as water connections and drains, electrical plant and flooring based on the type of detection system adopted.

Applications

The recessed installation is typically used, but not limited, to the following environments

- railway stations
- buses and shuttles stations
- tube stations
- airports
- sports and ski resorts
- fairs and congresses
- car parks and service stations

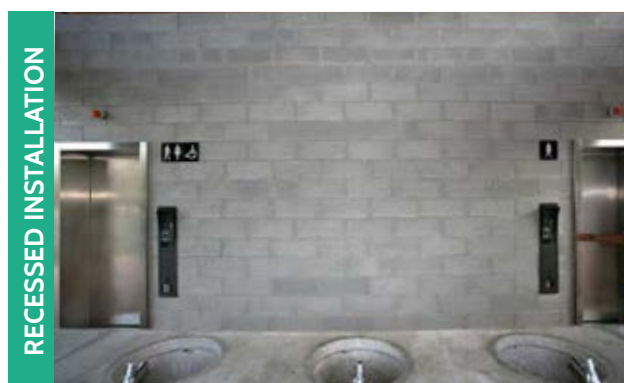
Components

The recessed installation includes standard components

- automatic / semi-automatic steel door
- sensors for presence detection
- automatic coin box
- cleaning device and WC
- fibreglass sink block

These optionals are available

- ☐ floor cleaning system
- ☐ hand dryer
- ☐ heating
- ☐ air conditioning
- ☐ furniture complements

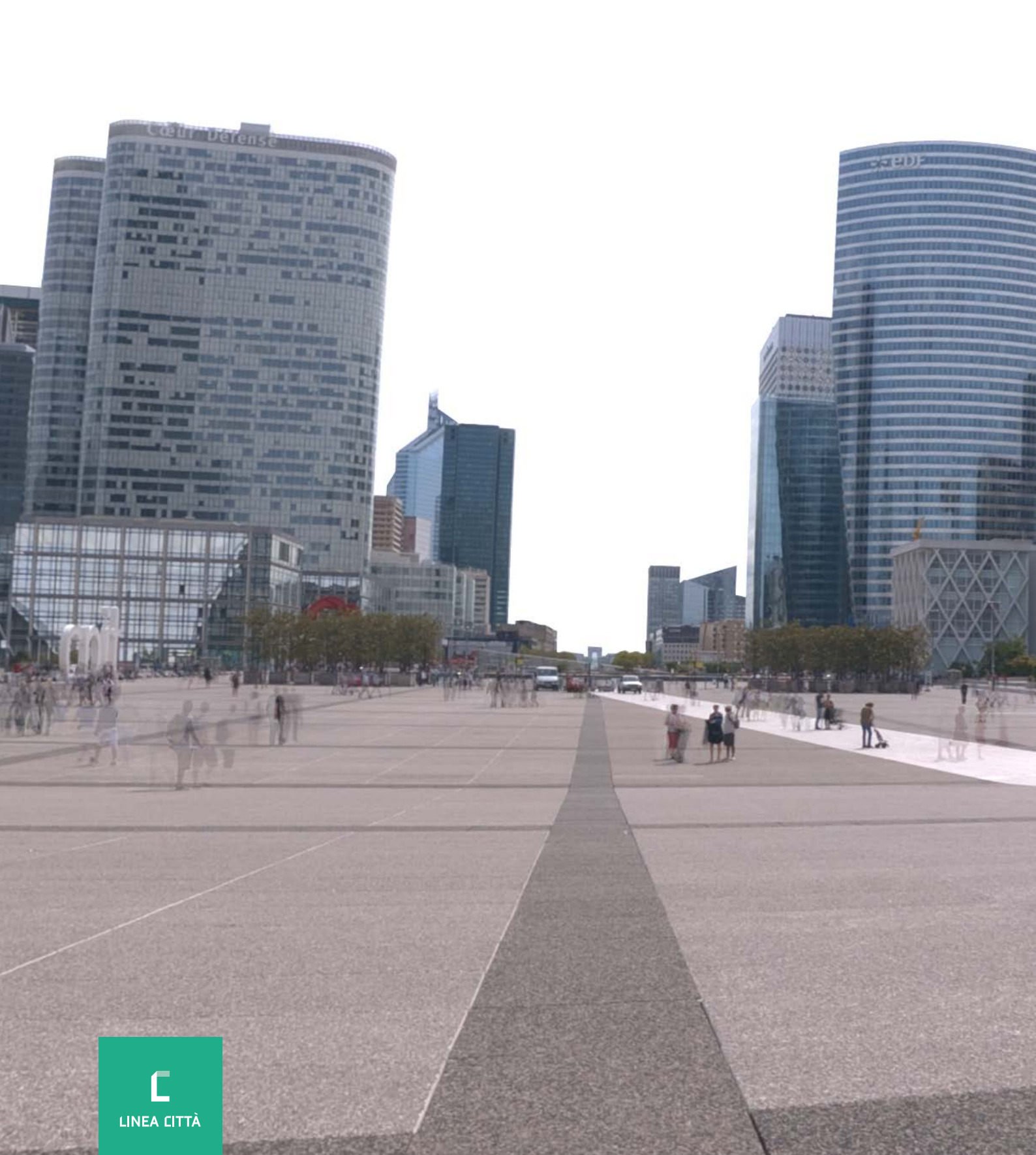


Accessories

Products
Standard complements of furnishing: self-extinguishing stainless steel bin, coat hangers
Changing table in plastic or stainless steel
Specific supports for persons with disabilities
Automatic dispenser spray sanitizer
Anti-graffiti products for external cladding
External bins for recyclable or generic collection
External watering hole for dogs
Benches and outdoor lighting combined with the kiosk
External distributor of sanitary bags for dogs

Technological solutions
Anti-freeze heating in machine room
Radar kit, internal and external, for safe door opening
Eurokey - International key to open door used by people with disabilities
Internal sound system
Voice instructions inside, for visually impaired users
Tactile instruction on main emergency controls, for visually impaired users
Signalling of anomalies with GSM modem
Coin box with privileged card reader





LINEA CITTÀ

AUTOMATIC URBAN TOILET

LINEA CITTÀ SRL

Via Anna Kuliscioff, 171 – 47522 Cesena (FC) – Italy
VAT ITO2222670404
Ph. +39 0547 317848 – Fax +39 0547 317842
lineacitta@lineacitta.it – www.lineacitta.it